

Technical Specifications

For fast Ethernet and Gigabit computer networks that require bandwidth-intensive voice, data, or video distribution applications. Meets all Cat6 TIA/EIA standards, and drastically reduces both impedance and structural return loss (SRL). Each of the individual pairs is bonded together to help maintain the twist-spacing throughout the line right up to the termination point. Constructed from high quality copper cable, this design minimizes Near-End Crosstalk (NEXT) levels. The molded, snagless boot prevents unwanted cable snags during installation and provides extra strain relief. Available in a variety of colors to easily color-code your network installation.

Connector 1: (1) RJ-45 Male
Connector 2: (1) RJ-45 Male

Electrical Characteristics

- Conductor DC Resistance - 9.38Ω/100m (maximum)
- Impedance - 100Ω
- Capacitance - 5600pf/100m
- Propagation Delay - 545ns/100m (maximum)
- Delay Skew - 45ns/100m (maximum)

Physical Characteristics

- Wiring Scheme - T568B
- Standard: Category 6 TIA/EIA-568-B-2.1, draft 9
- Connector: 50 micron gold-plated RJ45
- Temperature Rating - 60°C
- Voltage Rating - 30V
- Approvals - RoHS Compliant
- Warranty - Lifetime
- Package Type - Polybag

Conductor (Qty. 4 twisted pair)

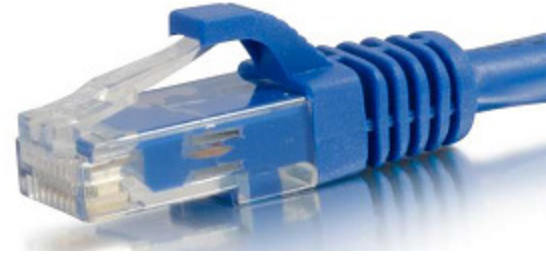
- Conductor Type - 24AWG (7/0.20), Stranded Bare Copper
- Insulation - H-D PE
- Diameter - 0.98 ± 0.05mm
- Colors - Blue, Blue-White, Orange, Orange-White, Green, Green-White, Brown, Brown-White

Connector Type (Qty. 2)

- Connector Type - 8P8C (RJ45)
- Gender - Male
- Connector Material - Polycarbonate
- Contact Material - Copper Alloy, Gold Plating - 50µm
- Hood Material - Molded PVC

Uses

- Gigabit 1000 BASE-T; 100 BASE-T; 10 BASE-T (IEEE 802.3)
- 4/16 Mbps Token Ring (IEEE 802.5); 100 VG-AnyLAN
- 100 Mbps TP-PMD (ANSI X3T9.5); 55/155 Mbps ATM
- Voice; T1



Available Colors



Available Lengths

6 in	7 ft	20 ft
1 ft	8 ft	25 ft
2 ft	9 ft	30 ft
3 ft	10 ft	35 ft
4 ft	12 ft	50 ft
5 ft	14 ft	75 ft
6 ft	15 ft	100 ft

** Custom Lengths on Request*

